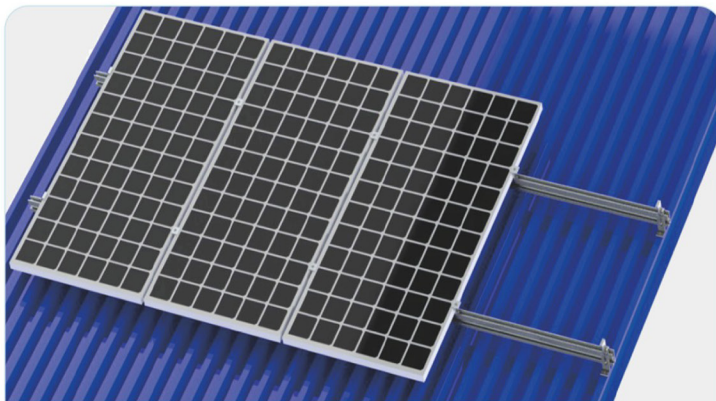


JX004 Color steel tile roof L angle bracket



This system consists of the following components:



L angle base, six hexagon bolt, flat washers, spring washers, waterproof pad, wood screws



Guide rail



Side clamp, hexagon socket bolt, spring washer, slider nut



Middle clamp, hexagon socket bolt, spring washer, slider nut

ADVANTAGES:

1. Good Appearance.
2. Easy and flexible Installation.
3. Diversified design
4. Light dead-weight.
5. Save installation materials

DESCRIPTION:

- Installation place:
Caigang watts roof
- Module slop:
According to the practical demand
- Drawing force:
1000N
- Wind load:
40m/s、32.5kg/m²、level 13
- Snow load:
70kg/m²
- Module type:
Frame
- Material:
Aluminium profile
- Colour:
Natural
- Warranty time:
25 years.



Project example photo

1 First step

Use the self-tapping screws to fix the L-angle base on the color steel tile (with waterproof pad), as shown below



Figure 1 (a)

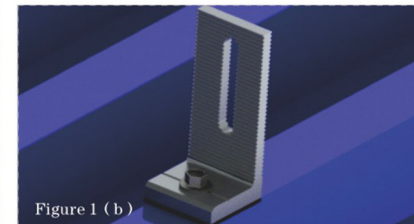


Figure 1 (b)

2 Second step

Use the M8*25 hexagon socket head bolt, flat washer, spring washer and slider nut on the guide rail to fix it on the L angle base, as shown below.

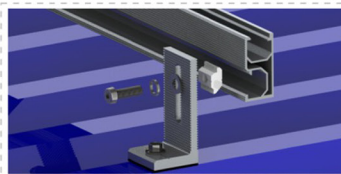


Figure 2 (a)

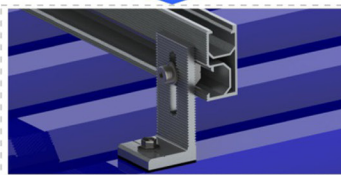


Figure 2 (b)



Figure 2 (c)

Remark: When the array is rather long, the rail and the rail are fixed by the rail connecting piece, as shown above:

3 Third step

Fix the modules on the rail with side clamps and the middle clamps, as shown below.



Figure 3(a-1)



Figure 3(a-2)

Side clamp fixed

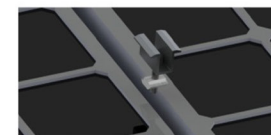


Figure 3(b-1)



Figure 3(b-2)

Middle clamp fixed

